

Sail Lake Superior's Apostle Islands

Bareboat or Captained Charters



Your key to enjoyable cruising Lake
Superior's enchanted isles.

Website: ApostleIslandsCharters.com



The Apostle Islands

Just 60 miles east of Duluth, Minnesota, the Apostle Islands National Lakeshore is part of Wisconsin and spread over an area of 290,000 acres. The 21 islands and 12 miles of mainland offers protected bays, public docks, pristine beaches, and natural beauty.

These islands offer the most protected and extensive cruising grounds on Lake Superior, with remnants of old growth forests, a diverse population of birds, mammals, amphibians and fish. The lighthouses make up the largest collection of registered lighthouses in the national park system.

Many anchorages are within an easy 1/2 to 3/4 day-sail, which enables you to select a picturesque cove or bay for a peaceful overnight, protected from forecasted winds. In addition you can explore sea caves, tour lighthouses, or hike the established trails.



Pikes Bay Marina

Apostle Islands Yacht Charters operates from Pikes Bay Marina, just 3 miles south of Bayfield WI. Each yacht is equipped with Bonnie Dahl's excellent guide 'Superior Way'. It's considered the 'bible' for cruising Lake Superior with details and diagrams of every harbor and cove. You will find everything you need for safe and enjoyable cruising.



Sunset, North Bay, Oak Island

Bayfield City Dock and Madeline Island Yacht Club offer dock side slips and access to local restaurants and bars. The Legendary Waters Resort and Casino is just a few miles north of Bayfield.

The city of Bayfield is the gateway to the Apostle Islands and is a hub for visitors who want to explore the natural beauty of the region, experience arts and culture and indulge in the bounty of local fruits, berries and fresh fish.



Presque Isle Bay, Stockton Island

For a small town, Bayfield is big on amenities with a supermarket, fine dining, and cozy breakfast spots.

Cruising the Islands

There are a couple of ways to cruise the Apostle Islands. Some daysail, returning to the marina each evening to enjoy the great restaurants in the city of Bayfield or on Madeline Island by car.

Most choose to sail away from civilization and cruise from island to island, not returning to the marina until their appointed time.



Where to next?

Many head for Stockton Island as their first anchorage. The bays on Stockton are 14.24 NM to the north east of Pikes Bay. On the way you pass Bayfield on your port and Madeline Island on your starboard. Arriving at Stockton you have the choice of Presque Isle Bay or Quarry Bay as anchorages in northwest or easterly winds. If the wind is from the west or southwest you can head around the corner to Julian Bay.

Presque Isle Bay has a dock for easy access to the Stockton Island Visitors Center which can also be accessed via a short walk from the beach at Julian Bay.

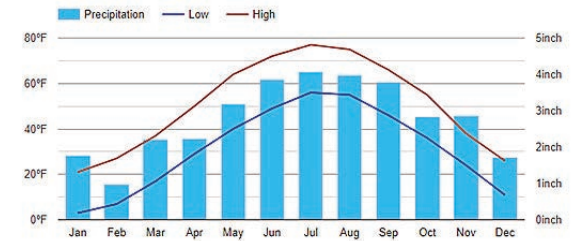
From Stockton you can head east to Michigan Island to view the lighthouses and head south to overnight at Big Bay on the east of Madeline Island. Alternatively you can head west to Raspberry to anchor in the sheltered sandy bay on the east side and use the trail to walk to the lighthouse where tours are available or cruise to many other anchorages in this



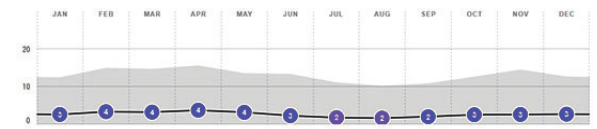
Raspberry Island Lighthouse

unique cruising location that some call the “British Virgin Islands of the north”.

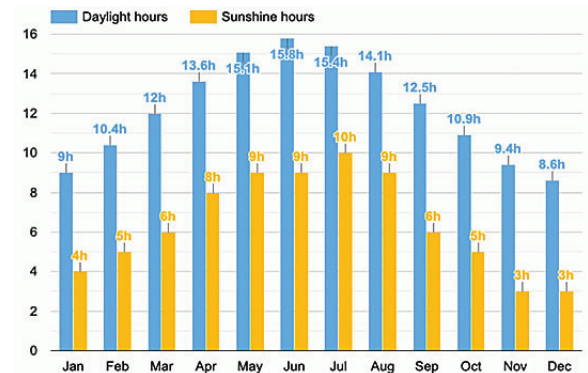
Average weather conditions in the Apostle Islands



Temperatures



Wind speeds



Sunlight and Day length



Check availability and book on line:

www.apostleislandscharters.com

Phone: (612) 423-1410

Email: info@ApostleIslandsCharters.com